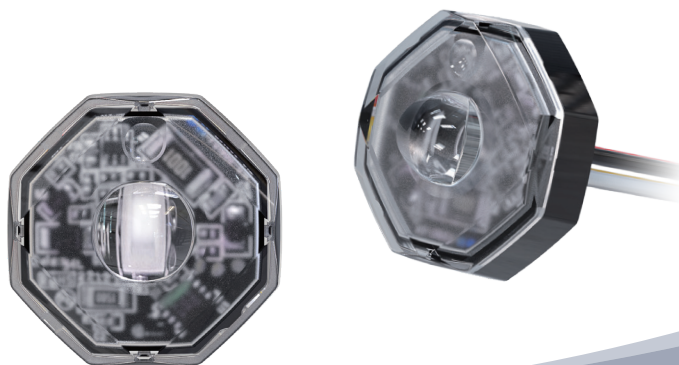


# OF01

## Octa-Fit Lighthouse



### FEATURES

- 4 units offer a directional warning approved to ECE R65 Class 1 Category X (XA1, XB1, XR1). **NEW!**
- Small-size lighthouse for installations on side mirrors, tailgate, trunk lids, or door panels. Perfect product for unmarked/undercover vehicles to accommodate various mounting applications.
- "OFF Override" wire allows turn signal to override warning.
- Self-contained flasher; no external flasher required.
- Multi-Voltage Input 12~24VDC.
- Multi-units synchronization in simultaneous or alternating flash.
- Reverse polarity protection.

### SPECIFICATIONS

**Compliance:** ECE R65 (XA1, XB1, XR1); ECE R10

**IP Rating:** IP67, IP69K

**LED Element:** High-power LED x 1 pc

**No. of Warning Pattern:** 9

**Operating Voltage:** 12~24VDC

**Avg. Current:** 0.135A @12VDC / 0.07A @24VDC  
(varies with flash pattern)

**Max. Current:** 0.27A @12VDC / 0.135A @24VDC

**Avg. Power:** 1.62 Watts (varies with flash pattern)

**Max. Power:** 3.2 Watts

**Wire:** Red-Vcc: 24AWG

Black-GND: 24AWG

White- Disable Warning: 24AWG

Yellow-Flash Patterns & Sync: 24AWG

Wire Length: 55cm

**Fuse Rating:** 2A

**Synchronization:** 20 Units

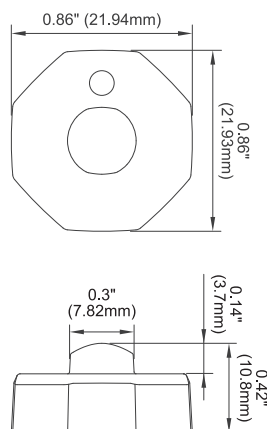
**LED Colour:** Red, Blue, Amber, White

**Lens Colour:** Clear

**Storage Temp.:** -40°C to +75°C

**Operating Temp.:** -40°C to +65°C

### DIMENSIONS



### FLASH PATTERN

FLASH PATTERNS				
1	Double	[R65]*	6	Steady EF**
2	Single	[2Hz]	7	Single-Quad
3	Triple	[2Hz]	8	Single H/L
4	Quad	[2Hz]	9	Single-Triple-Quint
5	Random			

\* Actual approval will be based on the model ordered.

\*\* For use with external flasher controller.

### PART NO.

■ **F019- 0003x-000** (ECE R10, 2PCS/BOX)

■ **F019- 1103x-000** (ECE R65, 4PCS/BOX)

**Replace x for:**

A = Amber

B = Blue

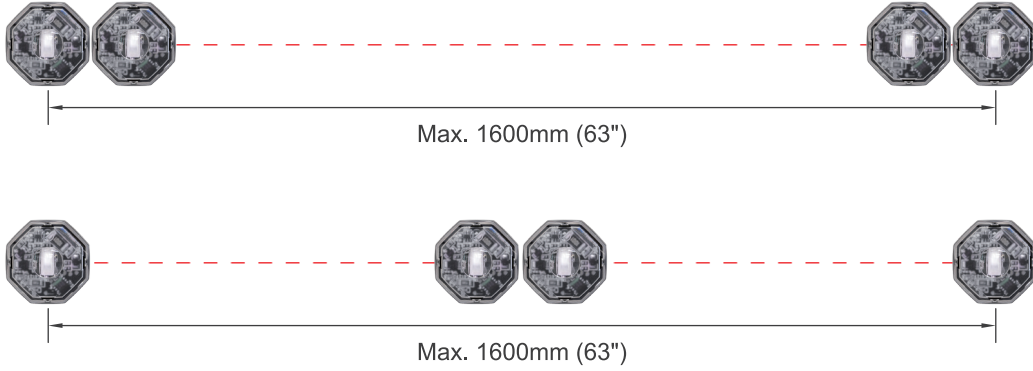
R = Red

W = White

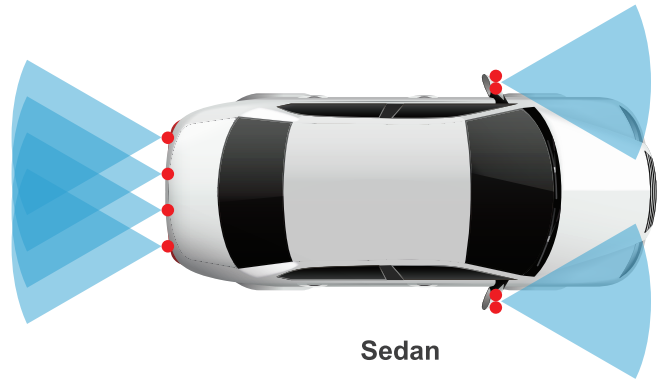
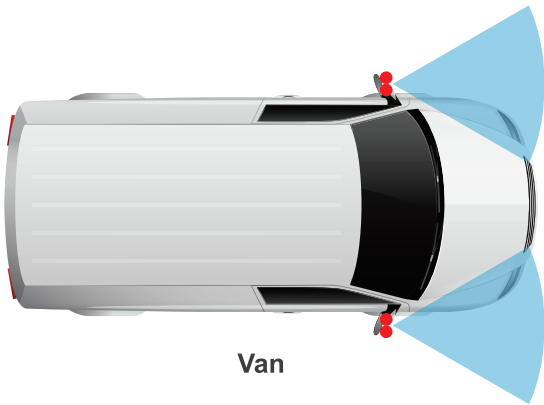
## APPROVED MOUNTING POSITION

The lighthoods must be set up in a set of four units to meet ECE R65 Cat. X. (Amber, Blue, Red)

Follow the graph and position the lighthood within the required distance and angle to fulfill the approval requirement.



### Application Examples



# SINGLE LED LIGHTHEAD

12-24VDC

## WIRING

To +VDC for Warning Mode (fuse @ 1A)..... **RED**

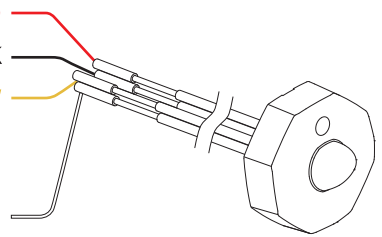
To Chassis Ground..... **BLACK**

For Synchronization and Flash Pattern..... **YELLOW**

Connect **YELLOW** wires of all lightheads together for synchronization.  
(All lightheads should be set to the same Flash Pattern)

Function Wire - OFF Override (default) or  
Cruise Mode..... **WHITE**

Apply this wire to +VDC with **RED** wire for OFF Override or Cruise Mode.



## OPERATION

### For Flash Pattern Selection:

While activating a warning mode, momentarily apply **YELLOW** wire to +VDC:

- Once to the next pattern.
- Quick three times to the default flash pattern.

### For Simultaneous or Alternating Synchronization:

1. Apply +VDC to **RED** and **YELLOW** wires simultaneously then remove **YELLOW** wire to enter *SETTING MODE*; the lighthead will display short flashes:
  - Single flash = Group 1      • Double flash = Group 2
2. To change Group, momentarily apply **YELLOW** wire to +VDC.
  - Lightheads of the same Group will flash together.
  - Lightheads of the different Group will flash alternately.
3. Save and exit *SETTING MODE* by disconnecting all power.

FP#	Flash Pattern	
1	Double	[2Hz]
2	Single	[2Hz]
3	Triple	[2Hz]
4	Quad	[2Hz]
5	Random	
6	Steady EF*	
7	Single-Quad	
8	Single H/L	
9	Single-Triple-Quint	

\* For use with external flash controller.

### Function Wire Setting - OFF Override or Cruise Mode:

1. Apply +VDC to **RED**, **WHITE** and **YELLOW** wires simultaneously then remove just the **YELLOW** wire to enter *FUNCTION WIRE SETTING*; the lighthead will display short flashes:
  - Triple flash = OFF Override (default)      • Quad flash = Cruise Mode
2. To change Group, momentarily apply **YELLOW** wire to +VDC.
3. Save and exit *FUNCTION WIRE SETTING* by disconnecting all power.

### Reset to Factory Default Settings:

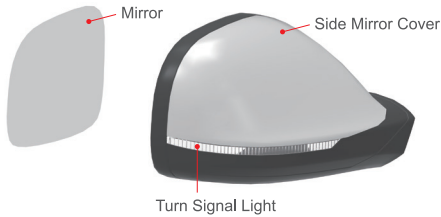
1. Apply +VDC to **RED** and **YELLOW** wires simultaneously then remove **YELLOW** wire to enter *SETTING MODE*.
2. Apply to +VDC for more than 5 seconds. The lighthead will display fast short flashes to signify restoring successfully.
3. Save and exit *SETTING MODE* by disconnecting all power.

# INSTALLATION (Covert Mount for Side Mirror w/ Turn Signal Light)

## IMPORTANT:

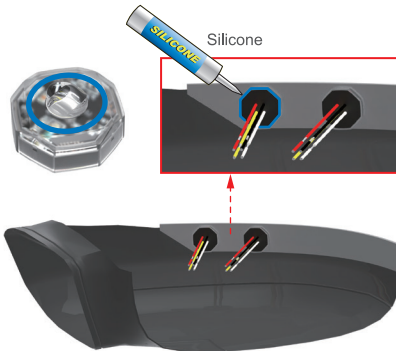
The disassembling method of the original vehicle parts will be different based on each vehicle manufacturer and model, please refer to original vehicle manufacturer's manual before installation.

1



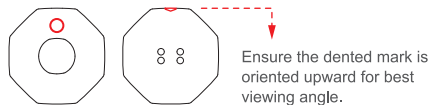
1. Remove the front mirror using a plastic pry tool.
2. Remove the side mirror cover by pushing the clips or loose screws from inside to access the harness assembly.
3. Disconnect the wire harness and disassemble the turn signal light assembly from the side mirror unit.

2

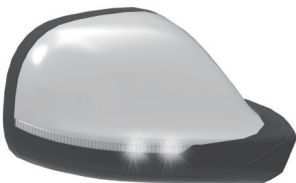


1. Drill an 8.5mm hole with 4mm depth on the inner lens or reflector of the turn signal light assembly.
2. Apply silicone and fix the lighthouse into the assembly.
3. Assemble the turn signal light back into side mirror set.
4. Route lighthouse's wire into vehicle chassis and connect the wires to the switch accordingly.

**Note:** Ensure the mark is oriented upward for correct optic distribution.



3



Test the lighthouse before reassembling the side mirror cover and mirror back.